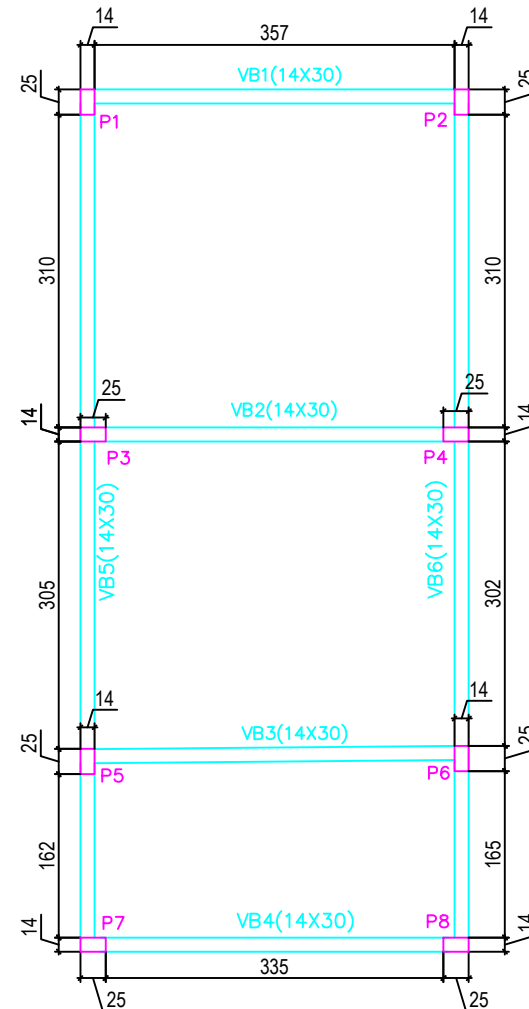
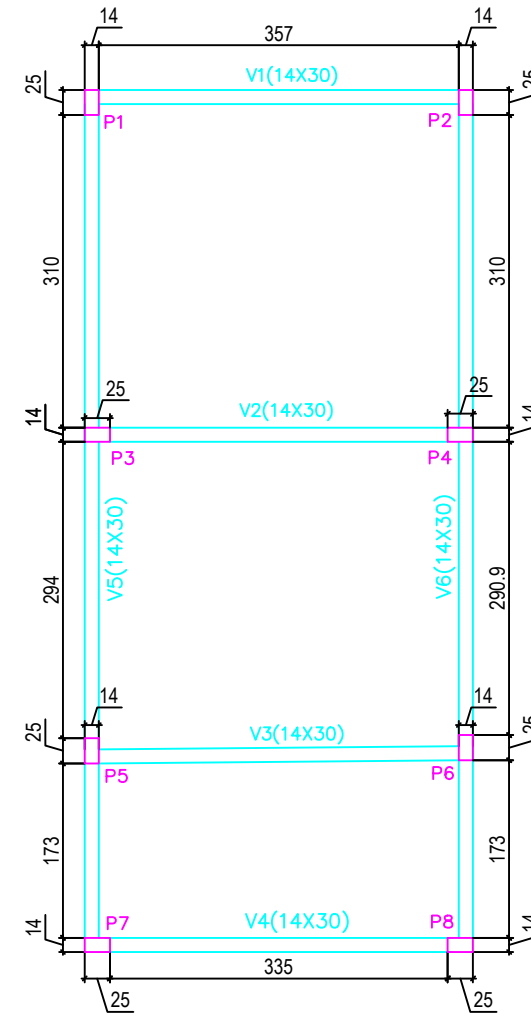


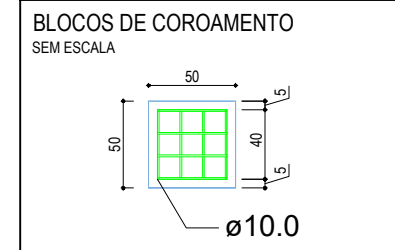
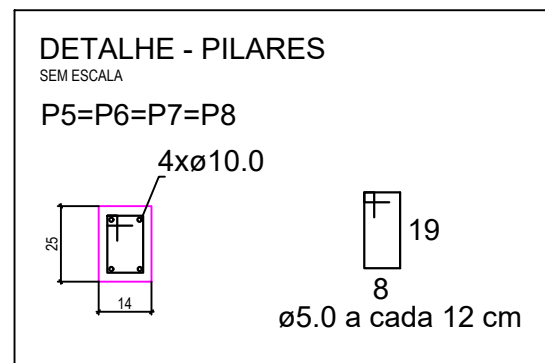
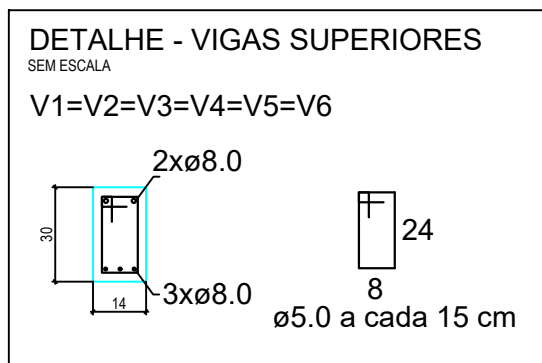
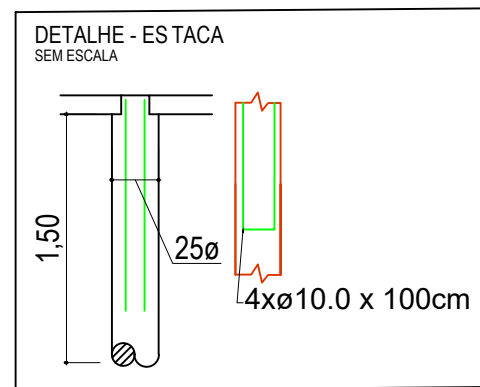
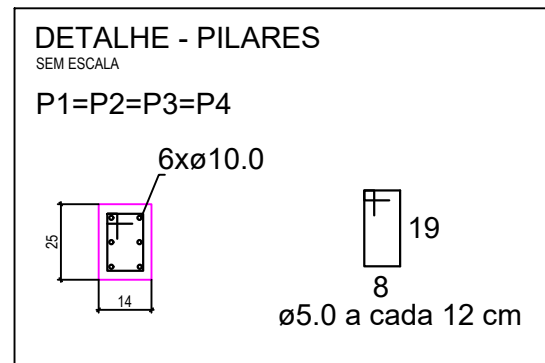
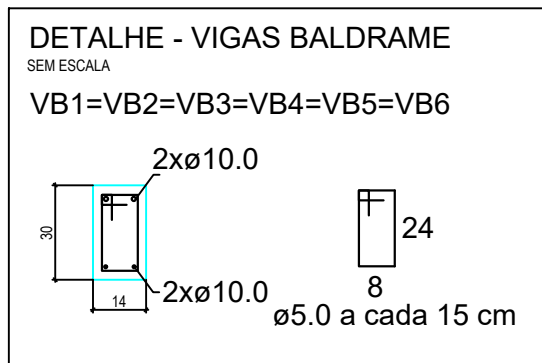
LOCAÇÃO DOS PILARES E VIGAS
ESCALA 1/75



PILARES E VIGAS BALDRAMES
ESCALA 1/75



PILARES E VIGAS SUPERIORES
ESCALA 1/75



MUNICÍPIO DE MEDIANEIRA Secretaria de Obras	APROVAÇÕES PÚBLICAS:		
	OBRA: AMPLIAÇÃO E ADEQUAÇÃO - ESCOLA SÃO LUIZ		
	RESPONSÁVEL TÉCNICO: Vinicius Cerezer Seben CREA-PR: 190789/D	PROPRIETÁRIO: Município de Medianeira -PR Antonio França - Prefeito	
	LOCAL: Rua Ivo Darolt, 360 - Distrito Maralúcia - Medianeira - PR		
	CONTEÚDO: CROQUI ESTRUTURAL		
ESCALA: INDICADA	DATA: Janeiro/2022	DESENHO: Eric M. Nunes Kato C. R. Maciel Vinicius C. Seben	PRANCHA: 04/06